

# EMILUX LIGHTING TECHNOLOGY CO.,LTD

---

Factory Address: A building, Guanhuang road 1#, Hengjiaotuo village, Gaobu Town, Dong Guan City, Guangdong Province, China.523269

<https://www.emiluxled.com> info@emiluxled.com

---



## LED WATERPROOF SPOT LIGHT DATASHEET

# EMILUX LIGHTING TECHNOLOGY CO.,LTD

---

Factory Address: A building, Guanhuang road 1#, Hengjiaotuo village, Gaobu Town, Dong Guan City, Guangdong Province, China.523269

<https://www.emiluxled.com> info@emiluxled.com

---

## Water proof Round Spot lights 10W



<b>Part No.</b>	<b>EM01-ES3-010-10W-4000K</b>
<b>Description</b>	Spot lights max 10W
<b>Dimming</b>	Triac/ 0-10V/ DALI dimming optional

# EMILUX LIGHTING TECHNOLOGY CO.,LTD

Factory Address: A building, Guanhuang road 1#, Hengjiaotuo village, Gaobu Town, Dong Guan City, Guangdong Province, China.523269

<https://www.emiluxled.com> info@emiluxled.com

## ● Datasheet:

<b>Type</b>	Product :	Spot light
	Model No. :	<b>EM01-ES3-010-10W-4000K</b>
<b>Electronical</b>	Input Voltage :	220-240V/AC
	Frequency :	50Hz
	LED Driver :	Tridonic LC 10/250/40 fixC SR SNC2/23-42V/250mA
	Power :	10W
	Power Factor :	0.5
	Total Harmonic Distortion :	<5%
	Certificates :	CE EMC Applicable (EN IEC 55015: 2019+A11:2020) Standards (EN 61547:2009,EN IEC 61000-3-2: 2019,EN 61000-3-3:2013+A1:2019) LVD (EN 60598-1 & EN 60598-2-2) Standards (EN 60598-1:2015+A1:2018, used in conjunction with EN 60598-2-2:2012) RoHS directive 2011/65/EU Annex II amending Annex (EU)2015/863 and amending Annex (EU)2017/2102.
<b>Optical</b>	Cover Material :	PC
	Beam Angle :	15/24/38/55°
	LED Quantity :	1pcs
	LED Package :	Bridgelux DS336 E series LES8-E8 CA LED Array
	Luminous Efficiency :	892lm
	Color Temperature :	4000K
	Color Render Index :	90
<b>Lamp Structure</b>	Housing Material :	Aluminum die-casting
	Diameter :	ø85 x 60mm
	Installation Hole :	Hole Cut 68-75mm
<b>Surface Finished</b>	Fished	Powder painting(white color/customized color)
<b>Water proof</b>	IP Rating	IP65 (Waterproof)
<b>Others</b>	Installation Type :	Recessed Type (refer to the Manual)
	Application :	Bathroom waterproof application
	Ambient Humidity :	≥80%R.H.
	Ambient Temperature :	-10°C~+40°C
	Storage Temperature :	-20°C~50°C
	Housing Temperature (working) :	<70°C (Ta=25°C)
	Lifespan :	50,000H

# EMILUX LIGHTING TECHNOLOGY CO.,LTD

Factory Address: A building, Guanhuang road 1#, Hengjiaotuo village, Gaobu Town, Dong Guan City, Guangdong Province, China.523269

<https://www.emiluxled.com> info@emiluxled.com

## Remarks :

1. All pictures data above are only for your reference, models may slightly differ due to factory operation.
2. According to demand of Energy Star Rules and other Rules, Power Tolerance  $\pm 10\%$  and CRI  $\pm 5$
3. Lumen Output Tolerance 10%
4. Beam Angle Tolerance  $\pm 3^\circ$  (angle below  $25^\circ$ ) or  $\pm 5^\circ$  (angle above  $25^\circ$ )
5. All Data were gained at Ambient Temperature  $25^\circ\text{C}$

- **Dimension:** (unit: mm  $\pm 2\text{mm}$ , The following picture is a reference picture)



Model	Diameter ① (caliber)	Height ③	Suggested Hole Cut	Net Weight ( Kg )	Remark
EM01-ES3-010	ø85	60	68-75	0.55	

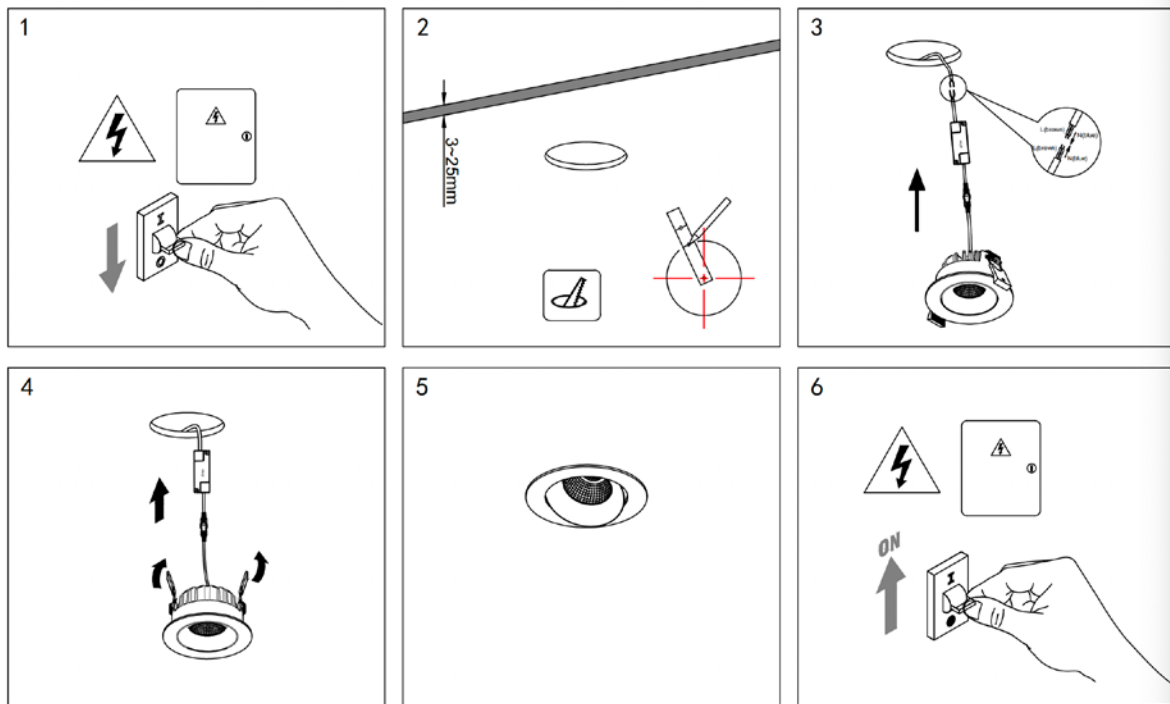
# EMILUX LIGHTING TECHNOLOGY CO.,LTD

Factory Address: A building, Guanhuang road 1#, Hengjiaotuo village, Gaobu Town, Dong Guan City, Guangdong Province, China.523269

<https://www.emiluxled.com> info@emiluxled.com

## ● Installation: (Notes on installation and wiring)

Please pay more attention to the below instructions while installation, in order to avoid any possible Fire Hazard, Electric Shock or Personal harm。



### Instructions:

1. Cut off Electricity before installation.
2. Please do not block any objects on the lamp (distance scale within 70mm), which will definitely affect heat emission while lamp's working
3. Please double check before getting electricity on if wiring is 100% OK, make sure Voltage for lamp is right and no Short-Circuit.

# EMILUX LIGHTING TECHNOLOGY CO.,LTD

---

Factory Address: A building, Guanhuang road 1#, Hengjiaotuo village, Gaobu Town, Dong Guan City, Guangdong Province, China.523269

<https://www.emiluxled.com> info@emiluxled.com

---

## ● **Wiring:**

The Lamp can be directly connected to City Electric Supply and there'll be detailed User's Manual and Wiring Diagram.

## **Warning:**

1. The Lamp is for bathroom wet application, keep away from Heat, Steam, Wet, Oil, Corrosion etc., which may affect its performance and shorten the lifespan.
2. Please strictly follow the instructions while installation to avoid any Hazard or damages.
3. Any installation, check or maintenance should be done by professional, please do not DIY if without enough related knowledge.
4. For better and long performance, please clean the lamp at least every half year with soft cloth. (Do not use Alcohol or Thinner as cleaner which may damage the lamp surface)
5. Do not expose the lamp under strong sunshine, heat sources or other high-temperature places, and storage boxes cannot be piled up exceeding the requirements.